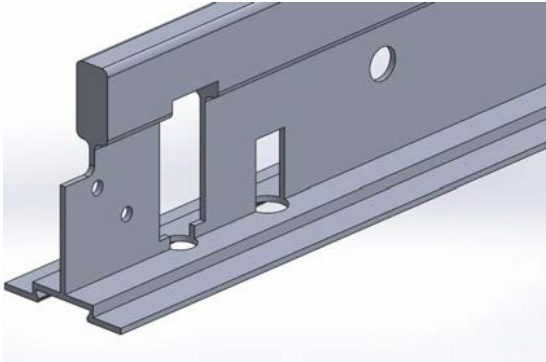




## **EZEXIT SOLUTIONS**

Innovative Emergency Exit Solutions



### **Description**

An LED exit system that is designed for new or retro-fit applications, field installed in t-grid, suspension ceiling\* or on the floor-way\* illuminating true path of egress to your closest exit location.

EZEXIT emergency light is available in either 2' or 4'. Each unit will be powered by an emergency driver and specifically designed for easy installation.

\* Products in development

---

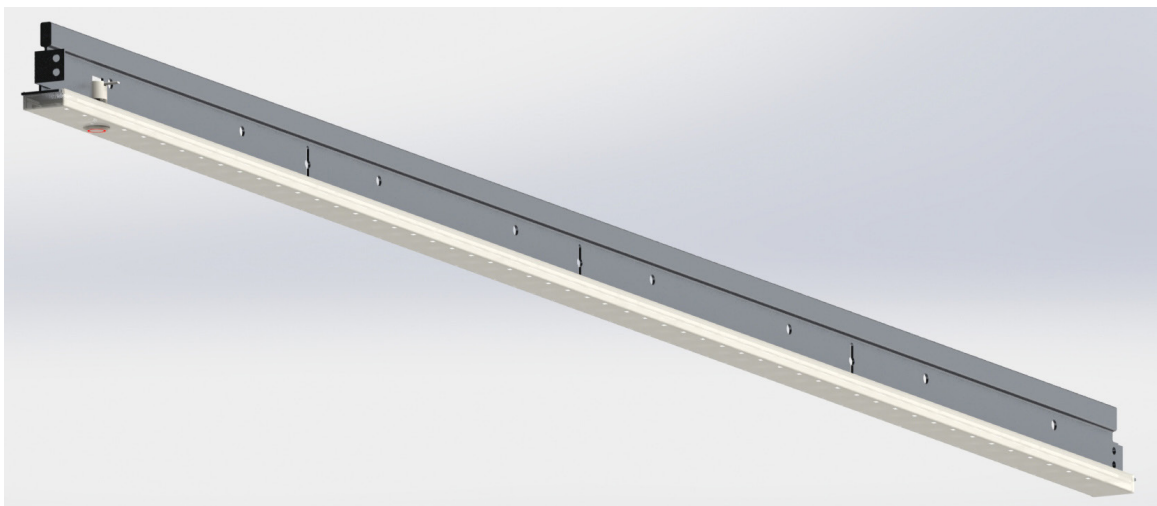
## **24" EZEXIT TGRID SYSTEM**

### **Features and Benefits**

- Universal mounting allows for installation with all types of T-Grid
- Universal Input 120-277VAC
- High Output integrated LED module; Powered by EM driver
- Integrated Test Switch
- Ni-Cd Battery
- Minimized Labor Cost
- Field Installable
- Easy Installation
- Architectural Pleasing Design

### **Applications**

- Offices/Meeting Spaces
- Schools/Universities
- Government/Civil Service
- Hospitality/Retail
- Healthcare
- Public Venues
- Sacred Spaces
- Warehouses





### GENERAL SPECIFICATIONS

Input Voltage	120-277VAC
Input Current	0.087A Max
Input Power (Nominal)	5.7W
Operating Frequency	50/60Hz
Output Power	10.7W (Constant) @ Emergency Mode
Max Lumen Output@ Emergency Mode	1480 lumens @5700K 80CRI
Battery Type	NiCd 9.6Vdc
Battery Capacity Available	26.9Wh
Recharge Time	24 Hours
Emergency Operation	90 Minutes
Operating Temperature Range (Ta)	0 ° C to 50 ° C/32 ° F to 122 ° F
Maximum Module Case Temperature (Tc)	Tc max 90 ° C/194 ° F
Estimate Lumen Maintenance	L70 > 60,000 Hrs/ L90: 40,000Hrs
Overall Size	23.9" L x 1.02 W x 1.86" H
Safety/Compliance	Dry and Damp Location
Surge Protection	Per C62.41 (TVS)
Protective Lens	1.2mm Frosted Polycarbonate V-0 Flame rated
Lens Transmittance	15%
PCB Material	FR4

2036 N. Gilbert Rd.  
Suite 2-293  
Mesa, AZ 85203

ezexitsolutions.com  
866-EZEXITS  
866-393-9487